



兆芯

Zhaoxin ( ZX ) Platform Product



## EMB-3580

Embedded Industrial Motherboard Based on ZX-2800M Chipset



### Product :

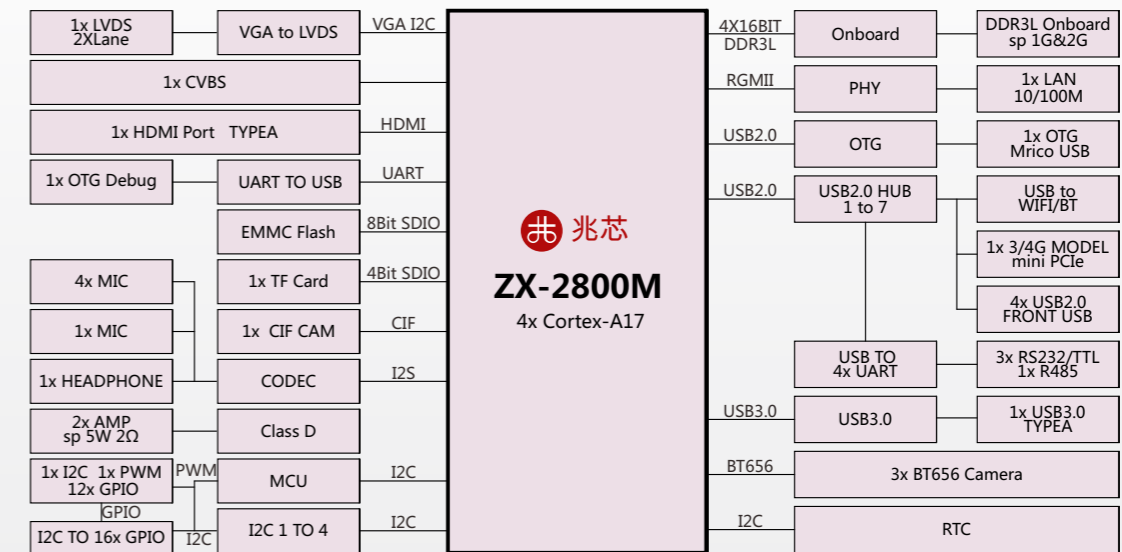
- ◆ Based on Zhaoxin ZX-2800M4x A17 processor
- ◆ Onboard 1/2GB DDR3L memory, 8GB EMMC , provide 1x TF card slot
- ◆ Support HDMI+ LVDS+CVBS display port
- ◆ Provide 3x RS232, 1x RS485/RS232, 1x Debug, 4x USB2.0, 1x USB3.0, 1x OTG, 12xDIDO, 1x AI and 1x PWM, 1x I2C
- ◆ Support onboard 100M wired network controller , speed : 10/100Mbps
- ◆ 1x Head Phone, 1x Mic, support 5W 2Ω dual channel power amplifier
- ◆ Provide 1x MINI PCIe ( support 4G ) , 1x SIM card slot, support WiFi, BT
- ◆ Size : 146mmx 102mm



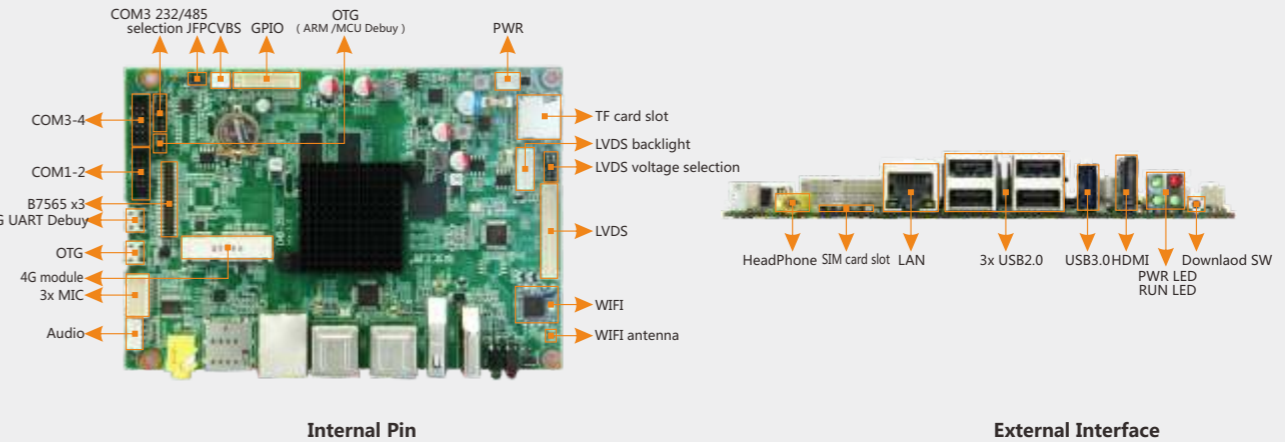
### Specification :

Model	EMB-3580		
Processor	CPU	ZX ARM ZX-2800M ( 4x A17 ) 1.8GHZ	
	GPU	Integrated high performance graphics core processor Elite2000S1 GPU	
Memory	Capacity	Onboard 2GB(standard)	
	Technology	DDR3L	
	Flash	Onboard 8GB EMMC(standard) , 16GB/32GB/64GB optional	
Graphics	LVDS	1x LVDS , supports maximum resolution : 1680x 1050@60HZ	
	HDMI	1x HDMI , standard TYPE A , supports maximum resolution : 1920 x 1080@60Hz	
	CVBS	1x CVBS	
	LAN	1x LAN , 10/100Mbps	
Ethernet	WIFI	Support 2.4G/5G , default 2.4G	
	Bluetooth	Optional	
	Function	Audio	1x HeadPhone, 1x Mic ; 5W 2Ω dual channel power amplifier
I/O	USB	1x USB3.0, 4x USB2.0, 1x USB OTG	
	COM	1x Debug, 3x RS232 , 1x RS485/232	
	MIC	4x MIC -in	
	GPIO	12x DI , 12x DO	
Expansion	Camera	3x BT656	
	Buttom	Reset Key, Power Key	
	I2C	Support	
	AI	1x AI	
	Mini PCIe	Provide 1x MINI PCIe ( support 4G module )	
WatchDog Timer	SD Socket	1x TF card slot	
	SIM Slot	1x SIM slot	
	WatchDogTimer	Support	
RTC	RTC	Support	
	Power	Power Supply Voltage	+12V
	Power Type	DC-IN	
Reliability	Type Power Consumption	10W	
	Operating Temperature	0°C-70°C	
	Storage Temperature	-40°C-85°C	
	Operating Humidity	5%~95% RH, non-condensing	
Mechanical	Dimensions(Wx D)	146mmx 102mm	
	Operation System	Supported OS	Android/Linux

### Structured Flowchart :



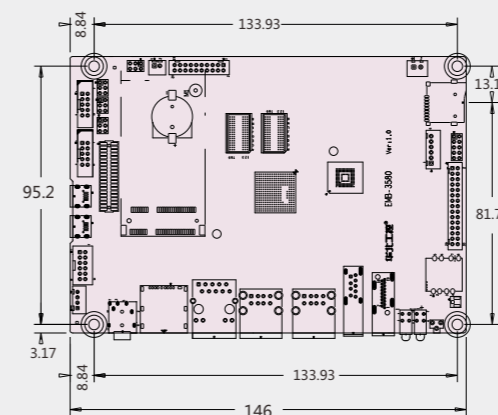
### Interface :



### Ordering Information :

Option	CPU	Memory	Flash	Display Port			LAN	COM	Expansion			WIFI	Bluetooth	P/N
				LVDS	HDMI	CVBS			MINI PCIe	TF card slot	SIM card slot			
1	ZX-2800M	2GB	8GB	1	1	1	1	4	√	√	√	√	√	5.13.0358010009
2	ZX-2800M	2GB	16GB	1	1	1	1	4	√	√	√	√	√	.....

### Dimension :



### Optional Accessories :

Optional Accessories	Description	P/N
Motherboard power cord	1x 2P plug to 22# electronic wire	6.81.0890140009
Serial port line B	2x 5P spacing 2.0mm IDC connector to Db9 male serial port	6.81.0260290039